

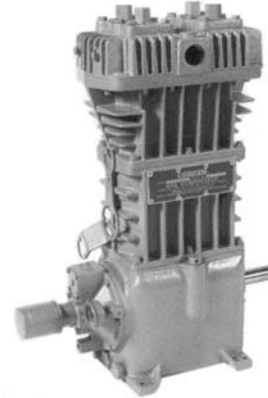
# COMPRESSORS

*Solutions beyond products...*



## Corken Compressors

- Compressors recover valuable residual vapors in tanks that pumps are unable to capture.
- Non-lubricated cylinder and piston design permits Corken compressors to operate without lubrication of any kind in the compression cylinders. Since no oil is consumed in the compression process, oil cannot contaminate the product.
- Spring loaded TFE piston rod seals compensate for wear and temperature variations. The seals minimize gas leakage into the crankcase.
- Crankshafts have integral, balanced counterweights for smoother operation.
- Oversize roller bearings on the crankshaft absorb radial and thrust loads, and they can be easily adjusted from an external position.

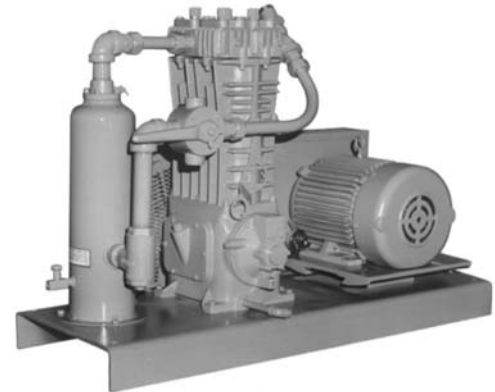


## **Bare Compressor with Flywheel**

Model	Approximate Capacity
91	28-44 GPM
291	44-88 GPM
491	77-198 GPM
691	132-330 GPM

## **Base Mounted Units**

Style 107 - Complete gas compressor bulk plant unit with pressure gauges, steel baseplate, liquid trap, 4-way valve, relief valve, strainer, interconnecting piping, adjustable driver slide base, V-belt drive and enclosed belt guard - ready to receive an electric motor.



Model	RPM	Motor - HP	Frame Size
91-107	780	5	184T
291-107	780	10	215T
491-107	780	15	254T
691-107	780	20	256T

## Corken Compressors Parts and Kits

### **291 Compressor**

Part Number	Description	Qty
3482-1X*	Suction Valve	2
1132-X2	Crosshead Assembly	2
1281XA*	Gasket Set	1
1367*	Connecting Rod Bearing	2 pair
1452-1X1*	Packing Set	2
3485-X*	Discharge Valve	2
1772*	Rings	6
1775*	Ring Expander	6
1983-X	Piston Assembly	2
2-235A	Head O-Ring	2
3550-X1	Repair Kit *Items Included	1

### **491 Compressor**

Part Number	Description	Qty
1384-1X	Crosshead Assembly	2
1452-1X1*	Packing Set	2
1481	Head Gasket	1
1481-XA*	Gasket Set	1
1491*	Connecting Rod Bearing	2 pair
1773*	Rings	6
1776*	Ring Expander	6
1985-X	Piston Assembly	2
2439-X*	Discharge Valve Assembly	2
2532-X1*	Suction Valve	2
3551-X1	Repair Kit *Items Included	1